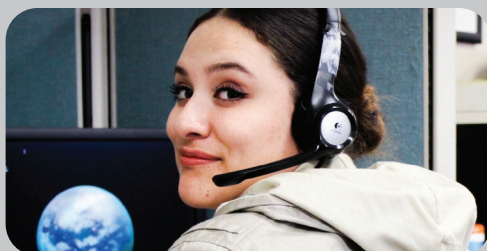


## LOOKING FOR WORK?

Are you unemployed or underemployed and living in Los Angeles County? Are you having a tough time finding a job because you've been homeless, incarcerated, struggled with addiction or have limited education?

### LA:RISE can help!

LA:RISE is a three to 12 month employment program that starts you off with a real job that pays while you learn. This transitional job helps you get the experience and skills you need to enter and succeed in the workforce. Once you are job ready, we'll work with you to find full-time competitive employment.



## ARE YOU READY TO MAKE A POSITIVE CHANGE IN YOUR LIFE?

Are you willing and able to work? Give us a call to learn more!

**1-888-4-LARISE (452-7473) or go to <http://redf.org/larise-program/>**

### PAID WORK EXPERIENCE IN ONE OF THE FOLLOWING INDUSTRIES

- Call Center
- Food Service
- Janitorial
- Landscaping
- Printing
- Retail
- Solar

### JOB READINESS PREP

- Interview Prep
- Job Search
- Professional Development Workshops
- Resume Building
- Vocational Training
- Job Fairs

### RETENTION SERVICES

- Access to Legal Services
- Case Management
- Financial Incentive
- Transportation Support
- Work Uniform

**INTERESTED? FIND THE PARTICIPATING ORGANIZATION THAT'S BEST FOR YOU ON THE BACK OF THIS FLYER—AND MAKE SURE TO ASK FOR THE LA:RISE INTAKE SPECIALIST!**

### IN ORDER TO BE ELIGIBLE FOR THIS PROGRAM, YOU MUST BE:

- 18 years of age or older
- Los Angeles Council District 10 Resident
- Currently unemployed and seeking long term employment
- Have experienced the following life circumstances: previously or currently homeless or unstably housed

	LOCATION	SERVING	INDUSTRY	CONTACT
<b>CHRYSALIS</b>	522 S. Main St. Los Angeles, CA 90013 <i>*Contact for more locations</i>	Low-income, Homeless/Unstable Housing, Criminal Record, Long-term Unemployed	Maintenance and Labor Services, Temporary Staffing	Eric Fong eric.fong@changelives.org (213) 995-6939  Client Services (213) 806-6300
<b>CRCO ENTERPRISES</b>	2415 S. Central Ave. Los Angeles, CA 90011	Opportunity Youth Ages 18-24, Homeless/Unstable Housing, Long-term Unemployed	Painting, Facilities Maintenance, Urban Infrastructure	Dena Brown dbrown@crccdent.com (323) 548-5149  Tresa McCoy tmccoy@crccdent.com
<b>GOODWILL INDUSTRIES OF SOCAL</b>	2900 S. Crenshaw Blvd. Los Angeles, CA 90016 <i>*Contact for more locations</i>	Opportunity Youth Ages 18-24, Homeless/Unstable Housing, Criminal Record, Long-term Unemployed	Retail, Janitorial	Robbie Thomas rthomas@goodwillsocal.org (323) 223-1211 ext. 2236
<b>GRID ALTERNATIVES</b>	1338 S. Flower St. Los Angeles, CA 90015	Opportunity Youth Ages 18-24, Military Veterans, Formerly Incarcerated	Renewable Energy/Solar Industry	volunteergla@gridalternatives.org (310) 735-9779  Adewale Ogunbadejo aogunbadejo@gridalternatives.org (310) 735-9765
<b>LA CONSERVATION CORPS</b>	2824 S. Main St. Los Angeles, CA 90007 <i>*Contact for more locations</i>	Young Adults: Disconnected from Work or School, Unemployed Long-Term, Out of School, Court Involved, Formerly Incarcerated and on Probation or Parole	Conservation, Land management, Construction, Zero Waste, and Energy Efficiency	Lucy Gutierrez lgutierrez@lacorps.org (213) 749-3601 x409
<b>LOS ANGELES LGBT CENTER</b>	1118 N. McCadden Place Los Angeles, CA 90038	Youth Ages 18-24 LGBT Identified or an ally of the community and Seniors Age 50+ that have been touched by homelessness or at risk of homelessness	Culinary Student, Prep Cook/ Dishwasher, Cook, Barista, Café Cashier/Server	Youth (18-24 years) – David Solano dsolano@lalgbtcenter.org (323) 860-2297  Seniors (50+) – Kendra Burks kburks@lalgbtcenter.org (323) 860-7335
<b>WEST ADAMS WORKSOURCE CENTER (AADAP)</b>	2900 S. Crenshaw Blvd. Los Angeles, CA 90016	Workforce Partner; LA:RISE referred and WIOA eligible; looking for regular employment and job referrals	N/A	Louis Lewis llewis@aadapinc.org (323) 293-6284

LA:RISE is managed by the City of Los Angeles Economic and Workforce Development Department (EWDD), Los Angeles County Workforce Development, Aging & Community Services (WDACS), and REDF (Roberts Enterprise Development Fund).



LA:RISE is a project funded by the City of Los Angeles and the County of Los Angeles Measure H Funds.