

A BRIDGE HOME 2020 UPDATE

The pilot partnership between LA:RISE and A Bridge Home (ABH) is in full swing. With support from the Office of Mayor Eric Garcetti, the City of Los Angeles Economic and Workforce Development Department (EWDD) and REDF, the infrastructure and design for the partnership and referral process between Employment Social Enterprises (ESEs) and ABH operators has been completed and is now being implemented.

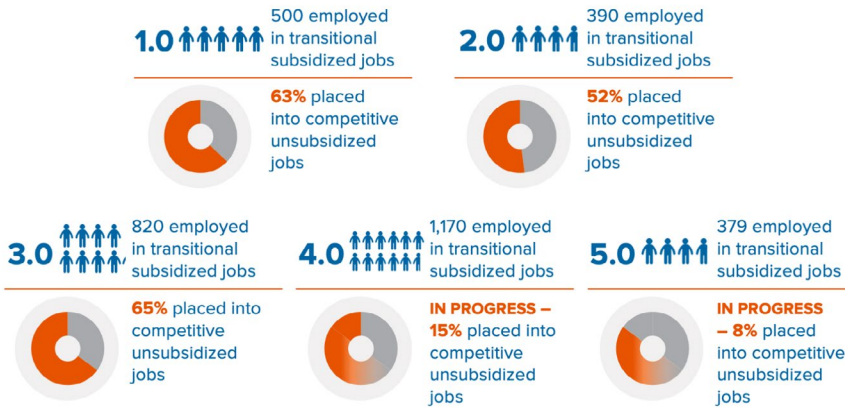
Collaboration between ESEs and ABH providers—including Chrysalis, Goodwill, Los Angeles LGBT Center, Center for Employment Opportunities (CEO), Downtown Women’s Center (DWC), Coalition for Responsible Community Development (CRCD), LA Conservation Corps (LACC), A People’s Concern, People Assisting the Homeless (PATH), and Hopics—is yielding results. On-site informational sessions for ABH clients have been held, providing information about open employment opportunities and an introduction to the benefits of employment and the basics of job readiness.

In addition to placing people into jobs, these partnerships are creating increased dialogue between service providers and more effective pathways out of homelessness.

LA:RISE PILOT PROGRAM IMPACT EVALUATION – FINAL REPORT

REDF and LA:RISE use data and evaluation to evolve and strengthen the program to better serve our participants and foster collaboration among program partners. EWDD contracted with Social Policy Research Associates (SPRA) to evaluate the pilot phase of LA:RISE. The evaluation included three studies: implementation, impact, and cost. Topline findings include: implementation and enrollment were successful; the impact on employment and earnings was larger and longer lasting among the “high-contrast” group; and linkages to housing programs were improved. View the final report [here](#). The SPRA evaluation will contribute to the evidence base and help us and the social enterprise field continue to improve.

Total Participants Served, Years 1.0 to 5.0 (2015-2020)



Key: = 100 people

Data comes from CalJOBS as of 11/04/2019
LA:RISE 4.0 and 5.0 reflect City and County combined totals



HIRING FAIRS

We are hosting four hiring fairs in 2020 for LA:RISE program participants. If you are an employer who wants to partake in one of the hiring fairs, please contact rdeasis@redf.org.

A PATHWAY FORWARD: HOMELESS TO HIRED SUMMIT

On September 30, 2019, LA:RISE hosted A Pathway Forward: Homeless to Hired Summit at the Center at Cathedral Plaza in downtown L.A. **Over 250 attendees** learned how a public-private partnership can help solve some of society’s biggest challenges. In celebration of the 5th programmatic year of LA:RISE, the event boasted powerful speakers from the Office of Mayor Garcetti, Los Angeles City Councilmember Mike Bonin (CD11), Los Angeles County Workforce Development Aging & Community Services (WDACS), EWDD, REDF, Anschutz Entertainment Group (AEG) Employee Services, CVS Health, and Greystar (National Apartment Association affiliation).

We also explored programmatic lessons and shared how we will continue to evolve the LA:RISE program for the greater good of our community.

U.S. DEPARTMENT OF LABOR LA:RISE VIDEO

A great way to wrap up 2019! The U.S. Department of Labor, Employment and Training Administration (ETA) chose LA:RISE to spotlight as an innovative approach to the design and delivery of employment services, and one that workforce professionals can learn from and possibly replicate. To view the video, which highlights our partner LA Conservation Corps, click [here](#).

ACADEMY MEETING FOCUSED ON FAIR CHANCE

On October 16, 2019, during our quarterly academy meeting, we hosted speakers Leslie Ivie, Attorney at Law from Restoration Law Center and Maria “Alex” Alexander, Executive Director at Center for Living and Learning for a presentation on Fair Chance Employment implementation and best practices. For a copy of the presentation, please contact larise@redf.org.

PARTNER VOICE

“Through our involvement with REDF and LA:RISE, Chrysalis clients have access to training and supports that we simply couldn’t offer otherwise. Through LA:RISE we have developed strong relationships with the workforce system, City and County governments and private employers, all in support of our clients’ individual goals.”

—Trevor Kale, Vice President, Chrysalis Enterprises

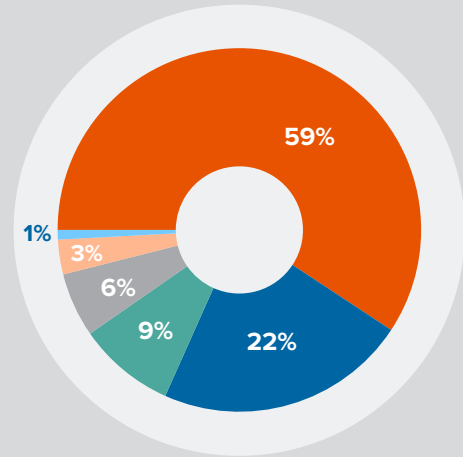
MEET HECTOR



The LA:RISE program and YWCA’s Digital Learning Academy (DLA) helped Hector uncover his passion for computers—and showed him how he could turn that passion into a career. Hector enrolled in DLA hoping that the classes would help him overcome challenges in his life, avoid

homelessness, and build a better future. He loved learning about graphic design, coding, and 3D printing. After completing DLA, Hector was offered a LA:RISE internship as a teacher’s aide for the YWCA GLA Union Pacific Child Development Center, where he taught senior citizens how to create digital greeting cards and flyers. Motivated by his success at YWCA, Hector has enrolled in East Los Angeles City College and hopes to train for his teaching credentials so he can continue teaching others computer skills.

Housing Status at Program Enrollment



- At-risk of homelessness
- Currently homeless in shelter
- Currently homeless on street
- Formerly homeless
- Not provided
- Rapid Re-housing

In FY 2019, over one fourth of participants were experiencing homelessness.

MEET PATRICIA



Patricia loves getting up every day to go to work because it keeps her motivated and hopeful about her future. She currently works as a Maintenance Technician at social enterprise Center for Employment Opportunities (CEO), where she feels accepted and respected. Patricia

enrolled in the LA:RISE program because she was struggling to find employment after incarceration and was experiencing homelessness. In addition to building a work history, Patricia is working with a job coach, writing a resume, and looking for permanent employment. Today, she walks into job interviews with confidence and is ready to seize her next opportunity.

SIGN UP TO RECEIVE QUARTERLY UPDATES, NEWS, AND ANNOUNCEMENTS ABOUT LA:RISE.

LA:RISE is managed by the City of Los Angeles Economic and Workforce Development Department (EWDD), Los Angeles County Workforce Development, Aging & Community Services (WDACS), and REDF (Roberts Enterprise Development Fund).



LA:RISE is a project funded by the City of Los Angeles and the County of Los Angeles Measure H Funds.