

PROPERTY MANAGEMENT CAREER PATHWAY LAUNCH

LA:RISE is excited to announce its partnership with the National Apartment Association to establish a Property Management Career Pathway initiative. LA:RISE eligible participants will now have access to property management training, work experience, nationally recognized credentialing, and ultimately job placement. The Apartment Association of Greater Los Angeles has donated training space for the initiative and will be providing valuable connections to local employers. Since March 2020, six LA:RISE clients have participated in Certified Apartment Maintenance Technician certification classes and 50% were placed in jobs within the industry. A new LA:RISE cohort of trainees will begin in February 2022.



LA:RISE REFERRAL FORM

Individuals interested in enrolling or referring a client can use the [partner directory](#) to learn more about LA:RISE's employment social enterprise partners and then complete the [Client Referral Form](#). They can expect to hear back from the selected employment social enterprise within two business days of submission.

PARTNER VOICE

"LA:RISE is an all-in, all-for-one, and one-for-all endeavor. The interagency collaboration keeps us learning and growing all the time as service providers. We work across multiple organizations to provide supports and develop new opportunities for our community. People might come to the program looking for a job, but they leave with a career and optimism. It's a privilege to be part of these journeys and this program."

—**Shanley Rhodes, Ed.D., Director of Career Pathways, Homeboy Industries**

CONNECTING EMPLOYERS WITH THE HOMELESS HIRING TAX CREDIT

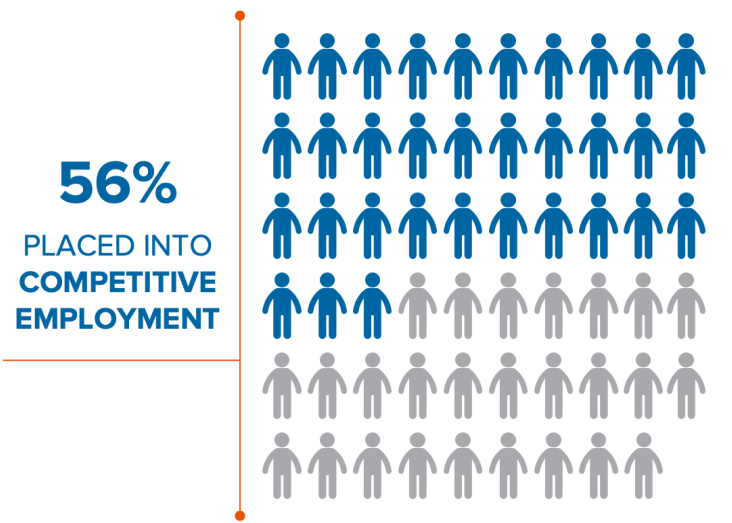


On January 1, 2022, the [Homeless Hiring Tax Credit](#) (HHTC) went into effect. Under the new program, private employers may receive \$2,500 to \$10,000 in tax credits per eligible employee with an annual cap of \$30,000. As LA:RISE expands its employer partnerships, this is a fantastic resource to encourage the hiring of LA:RISE participants. REDF is working with the Los Angeles Homeless Services Authority (LAHSA) to ensure that LA:RISE partners can serve as certifying entities.

CLIENT SUPPORT AVAILABLE FROM RESTORATION LAW CENTER

LA:RISE participants have access to free legal support via the Restoration Law Center (RLC), a LA:RISE partner contracted by REDF. RLC attorney Leslie Ivie guides LA:RISE clients with expungement assistance, ticket reductions, warrants, arrests, driver's license suspensions and holds, and resolving criminal cases. RLC refers clients to the Public Defender's office for felony representation, provides pro bono direct representation, offers referrals for legal representation as needed, and refers out for eviction, immigration, and family legal services. To date, over 200 LA:RISE participants have benefitted from RLC's services. RLC has also provided LA:RISE workshops and presentations on California's Fair Chance Employment Law, Expungement & Cleaning Up Criminal Record, Addiction, Recovery, and Criminal Defense, among other topics.

TOTAL CITY AND COUNTY PARTICIPANTS EMPLOYED, PROGRAM YEARS 1.0 TO 7.0 (2015-2021)



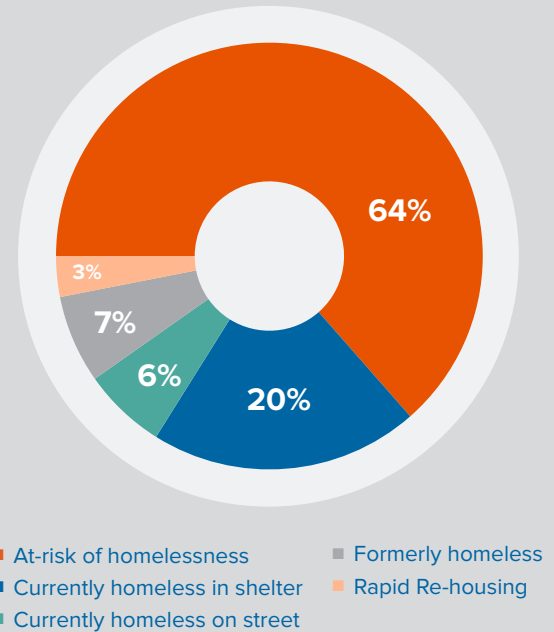
Key: = 100 people employed

5,860 individuals employed in transitional subsidized jobs

3,300 placed into competitive unsubsidized jobs

Source – CalJOBS data as of 12/30/2021 & SPR Evaluation Report

Housing Status at Program Enrollment



Source: CalJOBS self-reported data from 7.0 program year participants.

TRUDY, YWCA DIGITAL LEARNING ACADEMY



Over a long career, Trudy worked for the Los Angeles Board of Supervisors and ran for California State Assembly. She currently runs a grassroots non-profit that supports youth employment—and is working at YWCA’s employment social enterprise to support her continued success during a challenging time. At age 70, Trudy experienced homelessness after a spinal surgery limited her ability to return to the work that she loved. Equipped with the same resolve that had propelled her success, Trudy moved into a housing program where she learned about LA:RISE. Her skills were immediately recognized by the YWCA team, and she has contributed to research projects and organizational website updates. Trudy is thrilled to be part of a team and proud to be continually learning. Outside of work, she has completed WE360, WLE Work Life Essentials, and American Hospitality Association trainings. While she continues to work at YWCA, Trudy says she is in a completely different place now—she is full of self-confidence because of all that the YWCA team saw in her.

CHRISTIAN, CENTER FOR EMPLOYMENT OPPORTUNITIES



Christian recently graduated from the LA:RISE program and is excited about the future that he’s building. During the COVID-19 pandemic, Christian experienced homelessness and faced steep barriers to employment because of the stigma of his previous incarceration and a lack of work experience. While living at a halfway house, he learned about the employment social enterprise Center for Employment Opportunities (CEO) and was excited to begin his transitional employment. He developed confidence in his work and in himself, and soon grew to be a leader on his work crew. Christian also regularly met with a CEO job coach, attended Project Impact counseling sessions, and sought out legal services and peer support. After graduating from LA:RISE, Christian enrolled in a maintenance technician training program with the support of CEO and is working to obtain his driver’s license. Once he passes his final exams, Christian will be placed in full-time employment in a well-paying industry that will support his growing family.

LA:RISE is managed by the City of Los Angeles Economic and Workforce Development Department (EWDD), Los Angeles County Workforce Development, Aging & Community Services (WDACS), and REDF (Roberts Enterprise Development Fund).



LA:RISE is a project funded by the City of Los Angeles and the County of Los Angeles Measure H Funds.

REDF LA OFFICE: 801 S. Grand Ave., Suite 725, Los Angeles, CA 90017 | Contact: larise@redf.org