

LA:RISE FUNDED IN MAYOR BASS' APPROVED BUDGET

In her State of the City address, Mayor Karen Bass shared her vision for a “New Los Angeles.” Funding for LA:RISE was included as part of an approved city budget. “To build a stronger, healthier, happier and safer New L.A., we must make life easier for every Angeleno – starting with our most vulnerable.” LA:RISE will receive funding for the Regional LA:RISE City program and the LA:RISE Youth Academy for unhoused participants to continue receiving high-quality employment, training, and supportive services. [Read the approved budget here.](#)



PARTNER VOICE

“At the Los Angeles LGBT Center, our culinary social enterprise prepares LA:RISE Youth Academy participants for careers in the hospitality field. Through LA:RISE, we are able to provide transitional employment opportunities, while presenting new career pathways. The vital funding provided by LA:RISE allows our participants to receive a paycheck from day one, instantly placing them on a path to economic stability. And the higher internship hours provide a longer runway for our participants to access social services, helping them to overcome the numerous barriers they experience. Since our participants are exploring a new passion, they ultimately view their first permanent job as the start of an exciting new career. At the Los Angeles LGBT Center, we work to help all individuals be healthy, equal, and complete members of society. Our participation in LA:RISE plays a crucial role in helping us to fulfill our mission.”

—**Nick Panepinto, Director of Culinary Training and Operations, Los Angeles LGBT Center**



YOUTH ACADEMY CLIENTS RECEIVE ESSENTIAL TRAININGS AND CERTIFICATIONS TOWARDS PERMANENT WORK

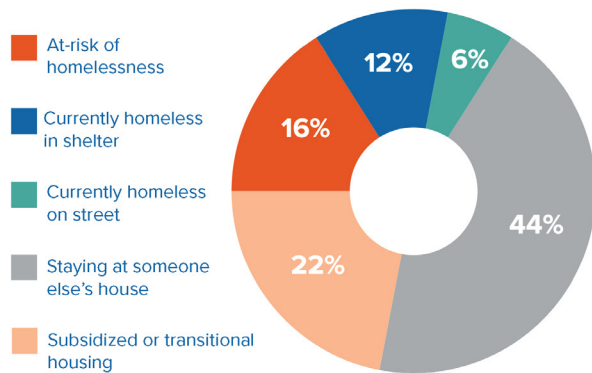
LA:RISE partner Catholic Charities Archdiocesan Youth Employment Services (AYE) supported five Youth Academy participants in enrolling in the job-training construction program at HireLAX. Participants received essential gear, including work boots, in order to participate in the program. Youth Academy participants logged 275.5 hours of practical, hands-on training, and received a certificate of completion on their way to permanent employment in the field. As an LA:RISE partner, AYE continues to support Youth Academy participants with access to trainings and educational opportunities, marking the first steps toward permanent employment.

QUARTER 4 LA:RISE YOUTH ACADEMY MEETING: AN URGENT FOCUS ON HOUSING

The Quarter 4 LA:RISE Youth Academy Meeting held on May 11 gathered LA:RISE partners and program staff to focus and engage around the pressing theme of housing. At the center of the meeting was a robust housing panel with panelists from three organizations, including Haley Fuselier, Senior Director at People Assisting the Homeless (PATH); Serina Cannon, Ombudsperson at The Housing Authority of the City of Los Angeles (HACLA) Section 8 Program; and Takita Salisbury, Adult CES Manager at The Los Angeles Homeless Service Authority (LAHSA). Each panelist shared key programs, resources, and how to access them. A deep dive into The Coordinated Entry System (CES) showcased how countywide programs and resources are connecting people experiencing homelessness within a system aimed at effective, efficient, and fair access to housing. As a still-new and evolving system, LA:RISE partners were encouraged to stay updated on trainings, stories, and system changes via the LAHSA newsletter.

CA4All Program Impact To Date

CA4All Participant housing status at enrollment



CA4All Participants Employed (July 2022 - July 2023)



277
enrollments

In the first year of the grant period:

22

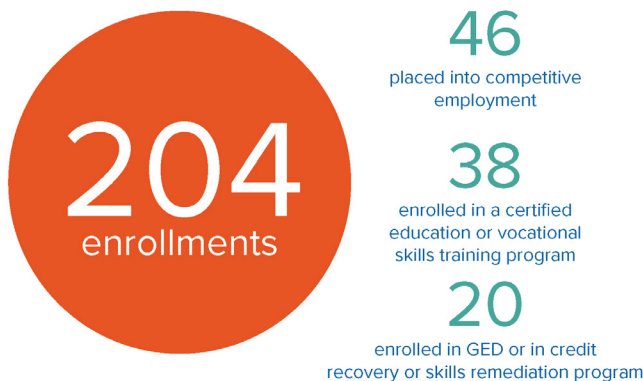
placed into competitive employment

62

enrolled in or completed GED or in credit recovery or basic skills remediation program or certified education program

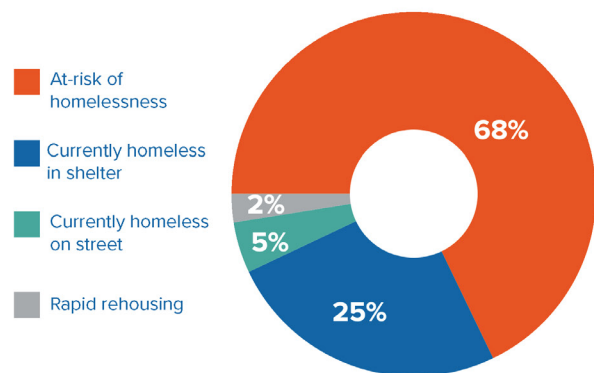
HHAP Program Impact To Date

HHAP Participants Employed (June 2021 - July 2023)



*Source: CalJOBS data as of 7/6/2023

HHAP Participant housing status at enrollment



JOSE, GOODWILL OF SOUTHERN CALIFORNIA



Prior to joining the LA:RISE Youth Academy, Jose was involved in a gang and incarcerated. Once released, he was housed at Amity Foundation and encouraged to enroll in LA:RISE. In addition to gaining experience working a cash register, tagging clothes, and pricing items, Jose attended classes to develop

soft skills as he prepared for future employment. "I am mostly proud that in just a short period of time in the LA:RISE program I am already breaking barriers that most people don't. I am realizing my potential." He now feels comfortable engaging with customers and can approach them with patience and professionalism. During his time working at Goodwill, he realized that he could do more, and his goal is to advance in his work. "When I think of the future, I get excited about having a career and fulfilling my goals of working in corporate at Goodwill."

EBONY, UCLA WORKSOURCE CENTER



Ebony was excited to complete her education and pursue a career working with children but faced a challenging transition after aging out of foster care. She experienced housing instability, which prevented her from attending school and finding work. She was excited to learn about the LA:RISE Youth Academy

program offered through the UCLA YouthSource Center (YSC) as a way to gain work experience, receive supportive services, and connect with job opportunities. Ebony heard about the program from an Instagram post shared by the Central City Neighborhood Partners (CCNP), a UCLA YSC partner worksite. She is an LA:RISE intern and one of the life skills she has learned is navigating the Metro to report to work on time. Her goal is to graduate high school while continuing to work and she looks forward to pursuing a career in nursing or child development.

LA:RISE is managed by the City of Los Angeles Economic and Workforce Development Department (EWDD), Los Angeles County Department of Economic Opportunity (DEO), and REDF (Roberts Enterprise Development Fund).



LA:RISE is a project funded by the City of Los Angeles and the County of Los Angeles Measure H Funds.

REDF LA OFFICE: 801 S. Grand Ave., Suite 725, Los Angeles, CA 90017 | Contact: larise@redf.org

©REDF 2023