

CO-CASE MANAGEMENT WORKSHOPS SUPPORT LA:RISE PARTNERSHIPS

LA:RISE kicked off the 2023-2024 program year with Co-Case Management workshops that connected employment social enterprises (ESEs) with their WorkSource Center (WSC) and America's Job Centers of California (AJCC) counterparts to build on best practices in supporting LA:RISE participants to reach their job placement and retention goals. REDF staff facilitated workshops throughout July and August, sharing tools to best support workflows and ongoing enhancements to services delivered for LA:RISE participants.



PARTNER VOICE

“LA:RISE is an invaluable program that has created opportunities for our hardest to serve populations. The program makes it possible to engage in an Earn & Learn model of paid work experience, with much needed supports such as transportation, uniforms, tools, needs-related payments, and much more. The partnerships this program has created have had a huge impact in allowing us to get money into the pockets of those who need it the most in these most unprecedented times.”

—**Claudia Aceves, Regional Director of Workforce & Career Development, Goodwill Southern California**



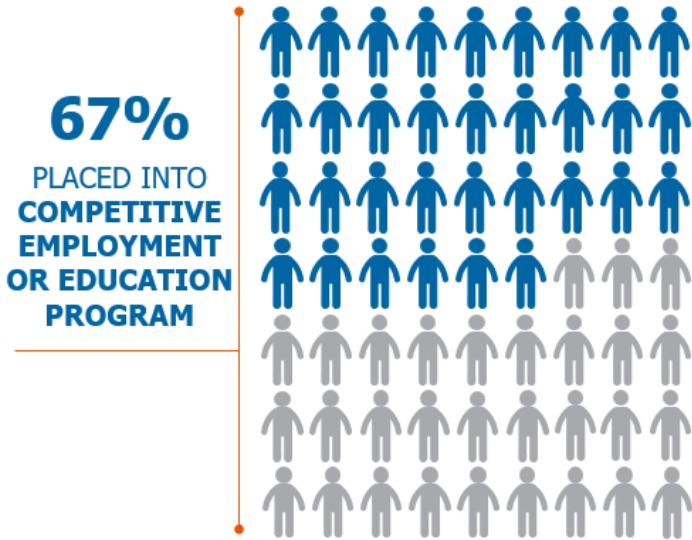
CEO HOSTS INAUGURAL ‘HOUSING READY’ WORKSHOP

In September, LA:RISE employment social enterprise partner Center for Employment Opportunities (CEO) brought together community partners for the first-ever ‘Housing Ready’ Workshop, a series that offers open discussions to connect and support people who identify as justice system-involved. The inaugural Housing Ready Workshop, titled “Let’s Talk about Housing,” served as a venue for community members to share their experiences, explore potential solutions, programs, and resources, and establish meaningful connections. CEO continues to focus on nourishing existing partnerships and cultivating new relationships for placements, programs, and housing opportunities available to the reentry community.

CRCD YOUTH ACADEMY PARTICIPANTS ENROLL IN CLEAN LA

The LA:RISE Youth Academy is proud to offer another employment pipeline for graduates. The Clean LA pipeline opens the door for participants that have demonstrated excellence in the areas of work performance, attendance, and attitude to be referred to the 12-month Clean LA program. Ninety days after enrolling in the Clean LA program, LA:RISE participants can begin receiving employee benefits. Youth Academy graduates of the Clean LA program then enter the City of Los Angeles’ pipeline. Currently, the Coalition for Responsible Community Development (CRCD) is working with the Maintenance Laborer pipeline, and in 2024, this pipeline will expand to include Street Services. After medical and background clearance, participants are offered permanent employment with the City of Los Angeles at a livable wage that supports them and their families. To date, 10 LA:RISE Youth Academy participants have successfully obtained full-time employment with the City of Los Angeles.

TOTAL CITY PARTICIPANTS EMPLOYED, PROGRAM YEARS 1.0 TO 8.0 (2015-2023)



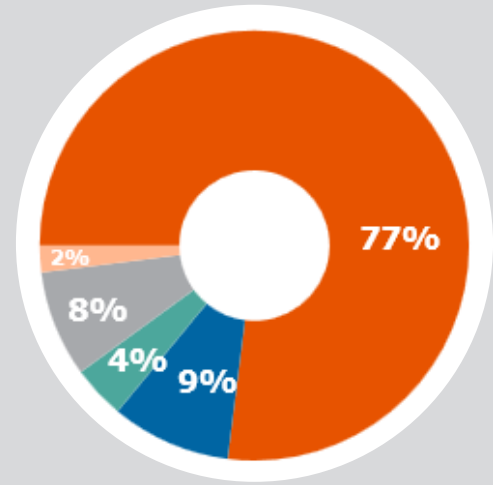
Key: = 100 people employed

Source – CalJOBS data as of 7/6/2023 & SPR Evaluation Report

6,320 individuals employed in transitional subsidized jobs

4,240 placed into competitive unsubsidized jobs or enrolled in education/training program

Housing Status at Program Enrollment



- At-risk of homelessness
- Formerly homeless
- Currently homeless in shelter
- Rapid Re-housing
- Currently homeless on street

Source: CalJOBS self-reported data from 8.0 program year participants.

RUBEN, ANTI-RECIDIVISM COALITION



After hearing about the Anti-Recidivism Coalition's (ARC) 2nd Chance Pre-Apprenticeship Program from a former graduate, Ruben applied and was accepted to the union training program in 2023. He calls his time in the LA:RISE and ARC programs “a second chance at life” — he went through life skills

and customer service training, learned about construction industry unions, and received one-on-one case management. Ruben is now in the SMART Local 105 and is working on his apprenticeship. “ARC staff go above and beyond to make sure participants have what we need and know what resources are available to us,” he shares. “It is awesome to have such a strong and capable support group to lean on.”

ALBERT, CENTER FOR LIVING AND LEARNING



After experiencing trauma in his 20s, Albert struggled with alcoholism, drug abuse, homelessness, and related job instability. He spent 20 months in prison before earning early release into a drug and alcohol treatment facility. From there, he enrolled in LA:RISE at the Center for Living and Learning (CLL) and gained

on-the-job experience at their call center. He quickly rose in the ranks and became a case manager for the LA:RISE program, supporting others in overcoming barriers to employment. “I am proud of what I’ve been able to accomplish, having been given the opportunity to see what I’m capable of, while receiving support within a recovery-focused environment,” he shares. Albert encourages anyone who is struggling in life to set goals and reach out to others for help to achieve them.

LA:RISE is managed by the City of Los Angeles Economic and Workforce Development Department (EWDD), Los Angeles County Department of Economic Opportunity (DEO), and REDF (Roberts Enterprise Development Fund).



department of economic opportunity
COUNTY OF LOS ANGELES



LA:RISE is a project funded by the City of Los Angeles and the County of Los Angeles Measure H Funds.

REDF LA OFFICE: 801 S. Grand Ave., Suite 725, Los Angeles, CA 90017 | Contact: larise@redf.org

©REDF 2023